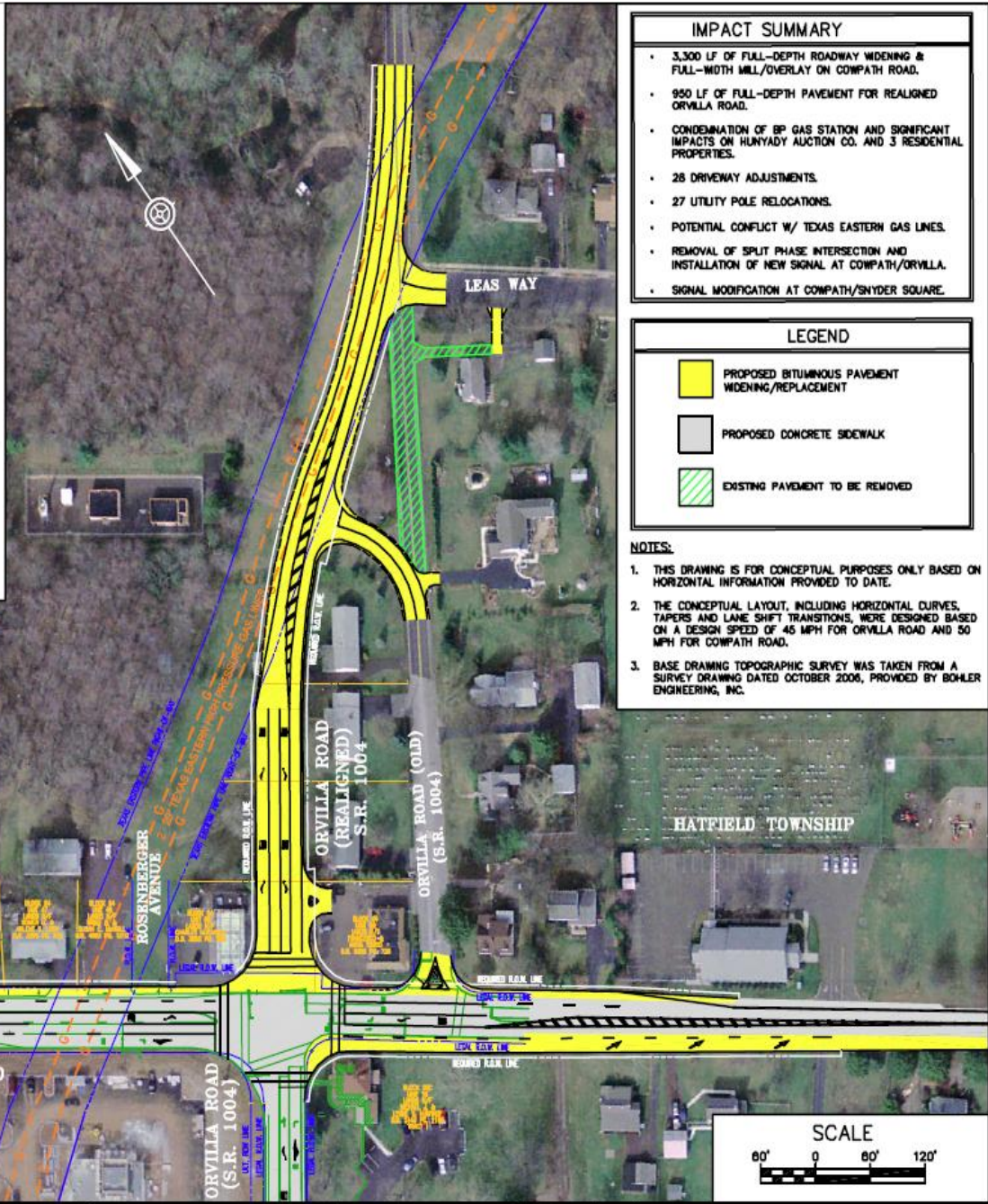





MATCHLINE BELOW

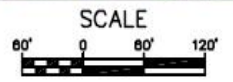


MATCHLINE ABOVE

IMPACT SUMMARY	
•	3,300 LF OF FULL-DEPTH ROADWAY WIDENING & FULL-WIDTH MILL/OVERLAY ON COWPATH ROAD.
•	950 LF OF FULL-DEPTH PAVEMENT FOR REALIGNED ORVILLA ROAD.
•	CONDEMNATION OF BP GAS STATION AND SIGNIFICANT IMPACTS ON HUNYADY AUCTION CO. AND 3 RESIDENTIAL PROPERTIES.
•	28 DRIVEWAY ADJUSTMENTS.
•	27 UTILITY POLE RELOCATIONS.
•	POTENTIAL CONFLICT W/ TEXAS EASTERN GAS LINES.
•	REMOVAL OF SPLIT PHASE INTERSECTION AND INSTALLATION OF NEW SIGNAL AT COWPATH/ORVILLA.
•	SIGNAL MODIFICATION AT COWPATH/SNYDER SQUARE.

LEGEND	
	PROPOSED BITUMINOUS PAVEMENT WIDENING/REPLACEMENT
	PROPOSED CONCRETE SIDEWALK
	EXISTING PAVEMENT TO BE REMOVED

- NOTES:**
1. THIS DRAWING IS FOR CONCEPTUAL PURPOSES ONLY BASED ON HORIZONTAL INFORMATION PROVIDED TO DATE.
 2. THE CONCEPTUAL LAYOUT, INCLUDING HORIZONTAL CURVES, TAPERS AND LANE SHIFT TRANSITIONS, WERE DESIGNED BASED ON A DESIGN SPEED OF 45 MPH FOR ORVILLA ROAD AND 50 MPH FOR COWPATH ROAD.
 3. BASE DRAWING TOPOGRAPHIC SURVEY WAS TAKEN FROM A SURVEY DRAWING DATED OCTOBER 2006, PROVIDED BY BOHLER ENGINEERING, INC.



FILE LOCATION:
E:ENG/807779/DWG/CONCEPTS

425 COMMERCE DRIVE
SUITE 200
FORT WASHINGTON, PA. 19034
TELE. (215)-283-9444
FAX: (215)-283-9447

DESIGN BY: BDD
DRAWN BY: BDD
CHECKED BY: ANK

JOB NO: 807779.21
DWG: 779CPT01
DATE: 8/5/08

CITY:
HATFIELD TOWNSHIP
1930 SCHOOL ROAD
HATFIELD, PA. 19440
(215) 855-0900

ORVILLA ROAD (SR 1004) & COWPATH ROAD (SR 0463)
CONCEPTUAL LAYOUT
HATFIELD TOWNSHIP
MONTGOMERY COUNTY

